

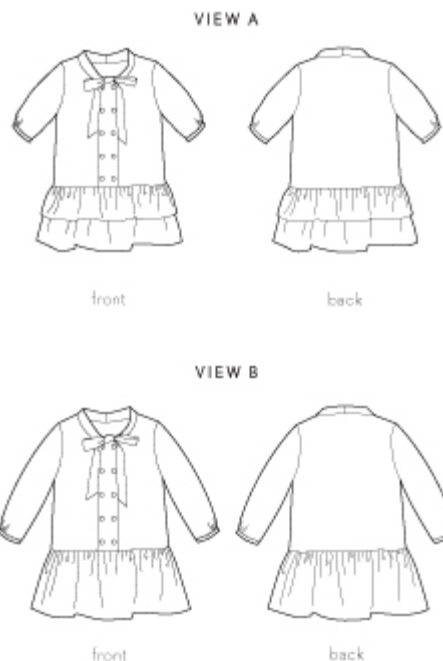
apple-picking dress



Girl's dress pattern. The pattern for this versatile dress includes a wide button placket, a bow at the neck, bias-bound sleeves, and a dropped waist for a vintage feel. View A has three-quarter-length sleeves and a double-layer gathered skirt, while View B has long sleeves and a single-layer skirt.

SUGGESTED FABRIC: Light- to medium-weight woven fabrics like quilting cotton, voile, lawn, shirting, poplin, broadcloth, flannel, and linen.
NOTIONS: Coordinating thread, lightweight fusible interfacing, 3/8-1/2" buttons (eight for sizes 6M-2T, ten for sizes 3T-7, twelve for sizes 8-12).

DIFFICULTY:



Fabric Guide (fabric width: 44" - 45")

SIZE	6-12 M	12-18 M	18-24 M	2T	3T	4	5	6	7	8	10	12
View A	1 3/4 yards	1 3/4 yards	2 yards	2 yards	2 yards	2 1/4 yards	2 1/4 yards	2 1/2 yards	2 3/4 yards	2 3/4 yards	3 yards	3 1/4 yards
View B	1 1/2 yards	1 3/4 yards	1 3/4 yards	1 3/4 yards	2 yards	2 1/4 yards	2 1/4 yards	2 1/2 yards	2 1/2 yards	2 3/4 yards	3 yards	3 1/4 yards

Finished Measurements

SIZE	6-12 M	12-18 M	18-24 M	2T	3T	4	5	6	7	8	10	12
Chest	21 1/2"	22 1/2"	23 1/2"	24 1/2"	25 1/2"	26 1/2"	27 1/2"	28 1/2"	30"	31"	32 1/2"	33 1/2"
Length*	16 1/2"	17 1/2"	18 3/4"	20"	21"	22 1/4"	24 1/4"	26"	28"	29 3/4"	31 3/4"	34"
View A Sleeve Length**	11 1/2"	12"	12 1/2"	13"	13 1/2"	14 1/4"	15"	16"	17"	17 3/4"	19"	20"
View B Sleeve Length**	14"	14 3/4"	15 1/2"	16 1/4"	17"	18 1/4"	19 1/2"	20 3/4"	22"	23 3/4"	25 1/2"	27 1/4"

* Measured from shoulder at neck

** Measured from center back neck

© Liesl and Co., Inc. 2011

