

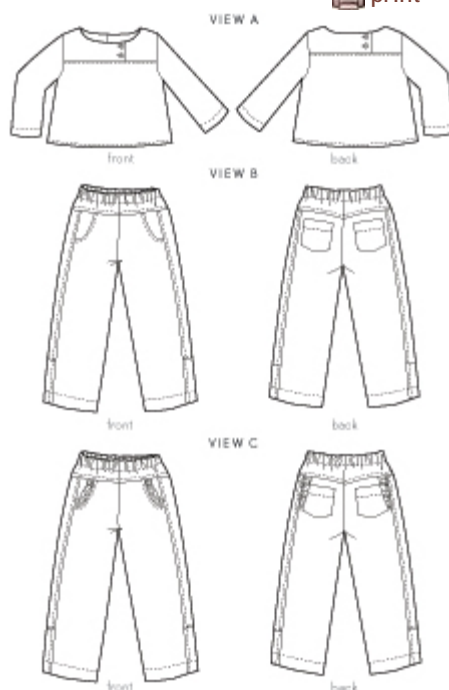
## after-school shirt + pants



Girl's pants and top pattern. This pattern features a loose-fitting pull-on shirt with long sleeves, a bateau neck, and a sweet offset button detail at the front and back yokes. The pull-on, elastic-waist pants include a separate side panel, which allows for use of a contrast side panel near the hem. An alternate view of the pants includes ruffle details at the front pocket opening and at the back.

**SUGGESTED FABRICS:** SHIRT AND PANTS (Fabric B): Lightweight woven fabrics like quilting cotton, voile, lawn, shirting, poplin, broadcloth, and linen. PANTS (Fabric A): Light-to medium-weight woven fabrics like quilting cotton, chambray, twill, lightweight denim, and fine-wale corduroy.

**NOTIONS:** SHIRT: Coordinating thread, four 1/2-5/8" buttons, lightweight fusible interfacing. PANTS: Coordinating thread, 1 yard of 3/4" elastic.



**DIFFICULTY:**

**Fabric Guide (fabric width: 44" - 45")**

SIZE	6-12 M	12-18 M	18-24 M	2T	3T	4	5	6	7	8	10	12
View A	1 1/4 yards	1 1/4 yards	1 1/4 yards	1 1/4 yards	1 1/4 yards	1 1/4 yards	1 1/2 yards	1 1/2 yards	1 1/2 yards	1 3/4 yards	1 3/4 yards	1 3/4 yards
View B, Fabric A	1 yard	1 yard	1 yard	1 yard	1 1/4 yards	1 1/4 yards	1 1/2 yards	1 1/2 yards	1 3/4 yards	2 yards	2 yards	2 1/4 yards
View B, Fabric B	1/2 yard	1/2 yard	1/2 yard	1/2 yard	1/2 yard	1/2 yard	1/2 yard	1/2 yard	1/2 yard	1/2 yard	1/2 yard	1/2 yard
View C, Fabric A	1 yard	1 yard	1 yard	1 yard	1 1/4 yards	1 1/4 yards	1 1/2 yards	1 1/2 yards	1 3/4 yards	2 yards	2 yards	2 1/4 yards
View C, Fabric B	1/2 yard	1/2 yard	1/2 yard	1/2 yard	1/2 yard	1/2 yard	1/2 yard	1/2 yard	1/2 yard	1/2 yard	1/2 yard	1/2 yard

### Finished Measurements

SIZE	6-12 M	12-18 M	18-24 M	2T	3T	4	5	6	7	8	10	12
Chest	22 3/4"	23 3/4"	24 3/4"	25 3/4"	26 3/4"	27 3/4"	28 3/4"	29 3/4"	31 1/4"	32 1/4"	33 3/4"	34 3/4"
Shirt Length*	10"	11"	11"	12"	13"	14"	15"	16"	17"	18"	20"	21"

			3/4"	1/2"	1/4"	1/4"	1/2"	1/2"	1/2"	1/2"		1/4"
Sleeve Length**	14"	14 3/4"	15 1/2"	16 1/4"	17"	18"	19"	20"	21"	22"	23 1/4"	24 1/4"
Pants Hip	20 1/2"	21 1/2"	22 1/2"	23 1/2"	24 1/4"	25 1/4"	26 1/4"	27"	28 1/2"	29 1/2"	31"	32"
Pants Inseam	9 3/4"	10 1/2"	11 1/4"	12"	13 1/4"	15 1/4"	17 1/4"	19 1/4"	21 1/2"	23 1/4"	24 3/4"	26 1/4"

\* Measured from shoulder at neck

\*\* Measured from center back neck