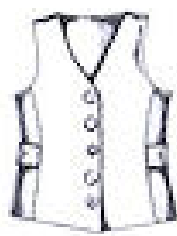


IJ868

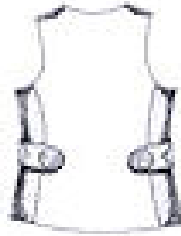
Classic Vest

A Mary Ann Donze Design

A menswear inspired V-neck vest. Hip length with flattering princess seaming. Fully lined with two belt options offered. Close with hidden oversized snaps and trim right front with a mismatched assortment of buttons or choose three large buttons to secure the front. Sizes S – 3XL



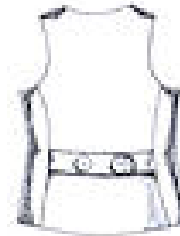
View A - Front



View A - Back



View B - Front



View B - Back

Materials List

View A or B

From one 54"/60" wide fabric:

- Sizes S, M – 1 1/8 yards
- Sizes L, XL – 1 1/4 yards
- Sizes 2X, 3X – 1 1/3 yards
- Same yardage for lining
- Optional: 2/3 yard fusible interfacing

From one 44" wide fabric:

- Sizes S, M, L, XL – 1 1/4 yards
- Sizes 2X, 3X – 1 1/2 yards
- Same yardage for lining

View A

Using three different fabrics for all sizes:

- Fronts and Belt – all fabric widths: 3/4 yard
- Side Fronts and Side Backs – all fabric widths: 1/2 yard
- Center Back – all fabric widths: 3/4 yard
- Optional: 2/3 yard fusible interfacing
- For lining, see left column

Notions

View A: As shown, four 30mm sew-on snaps by Dritz, seven mismatched vintage or new buttons ranging in size from 7/8" to 1 1/2" for front closure and side belts.

View B: Five 1 1/2" buttons from JMB International for front closure and back belt

Approximate bust measurement of finished garment

S – 39", **M** – 41", **L** – 43", **XL** – 45", **2XL** – 47", **3XL** – 49"

Fabrics featured are wools from recycled men's suit coats, Wascasset by Minick & Simpson for Moda, vintage bark cloth, and Bleeker Street by Michele D'Amore for Marcus Brothers.

This product may not be reproduced in any form unless stated otherwise. All designs, photographs, and images are protected by federal copyright. This pattern is intended only for non-commercial, personal purposes and may not be used in the production of goods for sale without prior written consent. All rights reserved.

©2010 Indygo Junction, Inc.

E-mail: info@indygojunction.com

www.indygojunction.com

www.amybarickman.com

